



2019-20 ANNUAL REPORT



care for real
FOOD • CLOTHING • SUPPORT



Table of Contents

Leadership Letter	3
What is Care for Real?	4
Care for Real by the Numbers	6
Every Dollar Makes an Impact	7
Responding to a Pandemic	8
A New Look	10
Something Wonderful	12
Volunteers	13
Legacy Society	14
In-kind Partners	15
Donors	16
Tributes	21
Financials	22
Board of Directors	Back Cover
Staff	Back Cover





care for real
FOOD • CLOTHING • SUPPORT

Board of Directors

Nancy Meyerson
Chair

Jerry Case
Treasurer

Steven Pryor
Secretary

Jane Clifford

Don Cortelyou

Debbie Mellinger

Kim Mendiola

Nina Newhouser

The Rev. Jim Nixon

Ed O'Connell

Sid Panjwani

Van Perrine

Joyce Golbus Poll

Brendon Pozniak

Jennifer Schmidt

Dear Friends,

The fiscal year that just ended (April 1, 2019 – March 31, 2020) was a year of incredible highs and terrible lows – sometimes both at the same time – for Care for Real.

The low, of course, was the COVID-19 pandemic which ravaged our city and brought hundreds of first-time clients to Care for Real. At the same time, it was an incredible high as staff, volunteers and our community came together to ensure that our neighbors had the nourishing food they need to help stay healthy or to fight back should they become ill. You'll find their stories and how we responded, and are continuing to respond, to these challenges in this report.

There were two more "highs" this past year – the completion of our remodel which, fortuitously, made social distancing possible in our waiting room and a grant from the Reva and David Logan Foundation that enabled us, for the first time, to afford health insurance for our staff.

Throughout the highs and the lows, we drew our strength from you, our friends and supporters.

Care for Real is here now and for the long-haul. We are committed to alleviating hunger in our community and to serving people in need, even as the need continues to grow.

As we look forward to next year, our 50th Anniversary year, we are deeply grateful to you for enabling us to do the work we do. We hope we will be able to gather to celebrate this milestone together and in person.

Wishing you good health,

Nancy Meyerson
Chair

WHAT IS Care for Real?

Food

Care for Real is a primary source for food for more than 34,000 families each year. Ensuring that everyone who comes to Care for Real receives an abundance of healthy, nutritious groceries is our priority. Last year we met this goal by giving neighbors enough food to prepare more than 1.2 million meals.



Shoppers come once a month for shelf-stable groceries including rice, beans, nut butters, cereal, canned fruits and vegetables, canned chicken and fish and bottled juice as well as dairy, eggs and frozen meat. Community food drives and generous donations from retail and wholesale partners add variety to our offerings, allowing us to give our families spices, deli items, and even flowers and holiday treats.

But what really distinguishes Care for Real is our “daily table” filled with fresh fruits, vegetables and baked goods that we pick up seven days a week from our partners. Neighbors can shop the table up to four times a week every week of the year.

Clothes Closet and More

The Closet provides our clients of all ages with seasonally-appropriate gently used clothing, and we feature a special section for business attire. This past year, we were especially fortunate to receive a large donation of new winter jackets, hats, gloves and sweaters. Our families were thrilled as, for many, it was the first time they ever had new coats.

We also try to stock personal care items that can't be purchased with SNAP (formerly known as food stamp) benefits including diapers, shampoo, soap, toothpaste, feminine hygiene items and more. Several of our neighbors and local organizations held special drives to stock these in-demand essentials.



We're a food pantry, a clothes closet,
a pet food pantry and much, much more.



Pet Pantry

One of our most beloved services, the Care for Real pet food pantry, was created so that people don't need to choose between feeding their families and feeding their pets or, even worse, surrendering their animal companions because they can't feed them. Last year more than 21,000 pounds of pet food were distributed thanks to Patti Colandrea of Bark Bark Club, the Pantry's co-founder, other local retailers, veterinarians, pet food wholesalers and neighbors who support the service.

Referral and Support Services

Because we are concerned with the whole person, all clients are interviewed quarterly to assess their current living and economic situation and determine their needs. We maintain a database of support agencies and provide referrals whenever possible.

The Little Extras

We want to bring more to our clients than just the basic necessities. We want them to celebrate and have the "extras" that add so much to life. That's why we try to have special foods available for ethnic and religious celebrations including Eid, Thanksgiving and Passover; school supplies for children in September, and toys and gifts for the winter holidays.

Equally important, we ensure that every person who comes to Care for Real is treated with dignity, respect and compassion.



Care for Real BY THE NUMBERS

The food, clothing and support we provided reflect the continuing need in our community. Because of you, we accomplished the following:



55,259
people
served



1,510,000
pounds
of food
distributed



241,900
items
of clothing and
household
goods provided

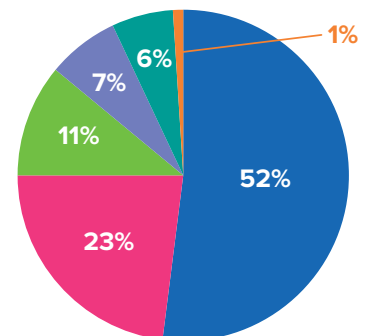


21,000
pounds
of pet food
supplied

Our families were as diverse as our community. More than 35% were seniors and 25% have children under the age of 18. Until COVID hit, more than 80% of adults between the ages of 18 and 65 were employed.

THEY ARE

- Caucasian
- African American
- Asian
- Latinx
- Multi-racial
- Native American



Everyone needs our help, and we're glad to be able to give it.

EVERY DOLLAR Makes an Impact

Your gift, no matter how large or how small, makes a tremendous impact. We are acutely aware of our responsibility to use your donations wisely and be good stewards of the money you entrust to us. More than 97% of every dollar received funds direct client services.

This year, the \$469,637 in cash donations and the more than \$6.65 million in in-kind donations we received enabled us to provide enough food for our clients to make more than 1,200,000 meals. And, because of our in-kind donors, we did this at an incredibly low cost per meal.

- \$1 = 4.6 meals**
- \$5 = food for a week**
- \$20 = food for a month**
- \$60 = food for 3 months**
- \$120 = food for 6 months**
- \$240 = food for a year**
- \$1000 = food for a year
for a family of four
with snacks!**



Responding to a **PANDEMIC**

A truly low point this past year was when COVID-19 hit. Even before Chicago's stay-at-home order went into effect, we began preparing for the inevitable. We understood that the closing of restaurants, retail and other businesses would result in surging unemployment, and that a great number of our neighbors would become newly food insecure.

We immediately undertook measures to keep our staff, volunteers and clients safe. To ensure we could keep operating if someone did become ill, we divided our staff and volunteers into two teams; one team could keep the pantry running if a member of the other team became ill and needed to quarantine. We changed from our client choice model to "grab and go" for food distribution so that we could maintain social distancing and serve people more quickly. We increased the amount of food we gave out at each visit so our neighbors could make fewer trips to the pantry. We bought hand sanitizer, disinfectant and face masks, and we hired a professional janitorial service to maintain our facility to the highest standards of cleanliness.

As more than 25 percent of the Chicago area's 370 food pantries closed, we remained open and worked even harder to ensure people would have nutritious food available no matter what their circumstances. Unfortunately, to accomplish this and ensure minimal contact, we had to temporarily suspend The Closet. The space did not allow for proper social distancing and was too "high touch" to operate safely. And we needed to put the pet pantry on hold as well. Both will be back as soon as practical.

On the Front Lines

Our staff stepped up and quickly adapted to the increased workload and rapidly changing environment. Here are our front-line leaders.



Mustafa Abdul Maboud

Mustafa oversees all pantry operations, from ordering food from the Greater Chicago Food Depository to being sure stock is properly stored and rotated.

He arranges for the pickup of food from our retail and wholesale partners, supervises our warehouse staff and does double-duty as our IT specialist.



Karen Feiler

Our volunteer coordinator, Karen oversees and schedules the more than 200 people who help out at Care for Real each year. She also coordinates the

pet pantry and clothes closet and is the "go to" person for registering and interviewing clients.



Nate Davis

Often called the "most important person" at Care for Real, Nate is our full-time van driver and the interface with our retail partners. Our vans operate seven

days a week, 365 days a year picking up produce, baked goods, dairy, prepared foods, meat and more from our generous donors.

Volunteers Came Out

A large percentage of volunteers at any food pantry are seniors – those most at risk for the coronavirus. And, because of this, many pantries were forced to close. But Care for Real's volunteers came out in force, with many of the newly-unemployed opting to donate their time to serving others. We made certain everyone had proper personal protective equipment to ensure their safety.

Here are just a few.



Bob Henning

An Edgewater resident for more than 40 years, Bob considers Care for Real an integral part of the community and of his life. He has volunteered in various capacities – from helping build-out one of Care for Real's first pantries to distributing food – for more than 20 years. Although he is part of the high risk age group, that didn't stop Bob from volunteering three to four days a week.



Stephanie Huesel

Stephanie Huesel has been a volunteer at Care for Real for several years, but the pandemic gave her more time to get involved. While furloughed from her retail career, she committed six days a week to helping at Care for Real. She chose Care for Real both because of the people and the convenience of volunteering at an organization in her own neighborhood.



Sue, Mike and Julia Sirvinskas

The Sirvinskas family first came to Care for Real when they were searching for a place to volunteer at Christmas nearly four years ago. Since then, they've been regular weekly volunteers. When Care for Real's needs increased because of the pandemic, they began coming in three days a week to keep our food distribution moving quickly and efficiently.

Those We Serve

We saw a surge in new clients when the city issued its stay-at-home order. People who thought they'd never need our help came to us. These are some of their stories.

Rami, a house painter for 25 years, and his wife live around the corner from Care for Real but had no reason to come to the pantry until COVID-19 hit. "No one wants a stranger in their house right now, so I have no work. I am so grateful Care for Real is here. I feel welcome and bring home more food than I can carry."

Paula is a single mother with two young children. She made a good income working as a server in a popular, upscale restaurant. But when restaurants were forced to close, she lost her job and her income. "My life changed in an instant. I don't know what I would have done without Care for Real. I thank you every day for helping me feed my family. At least I don't have to worry about my kids going hungry."

Mark had just started a new job as a consultant when the stay-at-home order went into effect. His company lost the contract he was assigned to, and he was laid off for lack of business. "I never thought I would be going to a food pantry for help. This is the first time I've ever been out of work. But because I can save on groceries, I'll be able to use my savings to pay my mortgage."



A New Lóók

One of the highlights of 2019 was the remodeling of Care for Real.

When we moved to 5339 N. Sheridan Road in 2012, we served 40 shoppers a day. By 2019, that number had more than quadrupled to an average of 170 people each day. Clients often were forced to stand in our crowded waiting room or, even worse, outside in the cold or rain. Our corridors were jammed; our executive director, accountant and development director all shared one office, and our facility needed upgrading.

We couldn't afford to move, and even if we could, there was no suitable space available within our budget in our community. Our options were either to continue serving our clients in cramped, inefficient space (and be forced to limit the number of people we could serve each day) or find a way to improve our current facility.

Fortunately, because of a generous infrastructure grant from an anonymous donor, bequests from the estates of Tom Kmiecik and Rosemarie Craig, tremendous support from Wheeler Kearns Architects and general contractor Bulley & Andrews and an outpouring of support for our Honor Wall, we were able to undertake a major renovation of our facility.

The work made the current space more efficient and, equally important, created an environment where our clients could wait in comfort and with dignity. We moved the waiting room to the front of the building, almost doubling the seating capacity and flooding the area with light. Client traffic flow was improved. Individual workspaces were created for the administrative staff, increasing productivity and enabling them to better serve our neighbors. Clothing in The Closet was

better organized and easier to access. And we even gained a small meeting/conference room.

We are grateful to our generous contractors and to those who contributed to our Honor Wall.

The Design and Construction Team

Wheeler Kearns Architects
Bulley & Andrews LLC (general contractors)
Acuity Brands Lighting
Air Designs System
All-Tech Decorating
Artflow Systems
Axis Lighting
Block Electric
BOS Forward Space
Great Lakes Plumbing and Heating
KSA Lighting
Northern Glass
RG Construction Services
Stay-Straight Manufacturing

Honor Wall Donors

Harold & Paula Baron
Jonathan Blake
Gregory Boshart & William Lawrence
Jennifer Breuer & Andrew Goldberg
Casey Byrne
Jerome Case
Elizabeth & Rob Castrejon
Clay Cerny- AAA Targeted
Robert & Isabel Curley
Joseph Czuba & Mary Connor-Czuba



The Dale Family
 Marlo Del Percio & Vic Filippini
 East Andersonville Residents' Council
 Larry & Janet Eaton
 Edgewater Historical Society
 Edgewater Uptown Builders Association
 Episcopal Church of the Atonement
 Meredith George
 Gignac & Polgar Families
 Donald Haider
 Ted & Kathleen Halloran
 William Hancox & Pedro Benitez
 William Harmon
 Mary Ann Harrington
 Stephanie Hashioka & Patti Sugano
 Charles & Jutta Helm
 Bob & Sue Henning
 Susan Jenks & Michael Wasserman
 Robert Jespersen, MD
 Adrienne & Paul Johnson
 Ariel Katz & Rene King
 Nadeen Kieren & Thom Green
 Reggie Griffin
 The Laslo Family
 Andrew Macri & Michael Kaba
 Shari & William Massey
 Mary & Paul McCloskey
 David Mehlman & Arlene Alpert Mehlman
 Nancy Meyerson
 Georgiana Micholas

Nina Newhouser & Michael Miles
 Phillip Noel & Jeffery Fizer
 Edward & Rebecca O'Connell
 Allan & Eleanor Odden
 Timothy O'Malley
 Max & Sara Overton
 Van Perrine & Jan Farnsworth
 Steven Pryor & Gregg Rojewski
 Robert Remer
 Rojo Design
 Saddle & Cycle Club
 Diane Sakai-Furata
 Nancy Schmitt
 Mary T. Schneider
 St. Andrews Women's Philoptochos Society
 Heather Steans & Leo Smith
 Lisa A. Stegink & Michael W. Erickson
 Joshua J. & Eunice Stone Foundation
 Margaret Sullivan & Chuck Elliott
 Robert H. Tucker
 Ingrid Verhulst & Pamela Holy
 Jeffrey & Paula Vogelsang
 Kathleen Maas Weigert & Andrew J. Weigert
 Andrew Welling & Matthew Mullen
 Jerry & Donna Witter
 Julie Wlach
 Zdunek Family
 Xavier Zininger - AIA Centro
 Zirlin Interiors Inc.

SOMETHING Wonderful

We were fortunate that many people and organizations supported us with grants, equipment and supplies, sponsored events and services we otherwise could not afford.

This past year, film makers Garry Grasinski and Lisa von Drehle produced a video that highlights the work we do and the people who make up Care for Real – clients, volunteers, donors and staff. You can view the video on our website, www.careforreal.org. We are grateful to have had our story told in such a meaningful way.

Gregg Rojewski of Rojo Design has again gifted us with his talents. He designed this annual report and is always willing to step in with we need help with graphics. And Ed Mellinger has taken on the role of “official photographer.” His work is featured here and in our newsletters.



Both the Andersonville and Edgewater Chambers of Commerce are strong supporters. From organizing drives on our behalf to sharing revenue from their festivals, they and their members show their concern for the community.

One such event was the Edgewater Chamber's contest to choose a Pet Mayor of Edgewater. In true Chicago fashion, campaigns were held and votes were “bought” as the electors had to pay to vote with the proceeds going to Care for Real. The election was as hotly contested as any in the nation with Pax the Goat emerging as the victor.



Then when COVID-19 hit, two of our strong supporters, the Reva and David Logan Foundation and the Stone Foundation, stepped up with critical supplies and resources to ensure we could operate safely and effectively.

We thank these organizations and all who sustain us in so many ways.

Volunteers

The Heart of Care for Real

Care for Real is about neighbors helping neighbors. This is especially true for the more than 200 people who help out in the pantry each year registering clients, stocking shelves and distributing food, sorting clothes, helping at events and much more. With a full and part-time staff of only seven, we truly could not operate without our volunteers.

Neerida Akakpo	Deepak Daroach +	Kim Houston +	Sarah Rabbitt
Zaya Albert	Courtney Davis	Hettie Jones	Dave Rasmussen +
Kelly Bass	Adele De Mooy +	Evan Juranek	Kate Rice
Kandy Bach	Patty Dixon	Katherine Kailing	Nick Risoni
Pedro Barajas	Robert Dixon	Sophy Kellogg +	Lauren Robinson
Juan Beltran	James Driscoll	Bob Kitsos +	Maria Ronnett +
Shirley Benton +	J Maxwell Duran	Pawel Kloza	John Rosen
David Beske	Christina Erwin +	Kelly Lamont	Rebecca Rossof +
Alice Blount +	Guian Estupigan	Ethan Larson	Paul Rupp
Larry Bochlike +	Charles Farrell +	Thanh Le +	Erica Salutz
Carla Boklage +	Amy Ferrell	Sue Magdziarz	Laurie Savas
Eric Boklage	Margaret (Maggie) Flynn +	Michael Mallett	Suzanne Schaeffer +
Julie Bonk +	Sarah Flynn	Stacy Manjarrez	Michael Sheridan
Sarah Bornstein +	Lindsey Garrett +	Kim Mendiola +	Dorjee Shoentsang +
Duncan Carmicael	Julia Gorman +	Muharema Menkovic +	Adam Sirvinskas +
Ann Casey +	Elizabeth (Lizzie) Grogan	Hannah Michels	Julia Sircinskas +
Sydney Chummar	Kent Haag +	Tim Miller	Mike Sirvinskas +
Marian Claffey	Bo Halterman	Emma Mitchell	Sue Sirvinskas +
Carter Cleland	Greg Hamill	Juan Moreno	Inez Smith
Linda Jo Clough	Al Haske +	Matthew Mullen	Neal Smith
Rodney Clough	Bob Henning +	Daniel Nguyen	Devin Thomas +
Patti Colandrea +	Sue Henning +	Chuck O'Bringer	Denise Thomas
Scott Collier	Yolanda Hernandez	Edward O'Connell	Paula Vogelsang +
Carol Common	Stephanie Heusel +	Julia Petrusan	Bahrija Vojnikovic
Henry Cooper +		Alexia Plaza	Julie Volkova
Rita Crimmins		Kathy Pozniak +	George Waddington +

Volunteers continued

Feng (Wong) Wang +	Chicago Chamber Choir	School German Club	Peirce Parents Group
Shana Yeh +		Launch Pad Lab	Praying Pelican Mission
Maggie Yousef +	Chicago Leather Community Outreach	Loyola Care For Real Committee	St. Al's YAM Volunteer Group
Jim Zangs +		Loyola Men's Basketball	St. Ita's Parish Young Adults
Sam Zike	Chicago Math and Science Academy	Loyola Women's Basketball Team	St. Marks Episcopal Church Youth Group
Karan Zutshi	Church of the Atonement	Loyola Women's Volleyball Team	State Farm Insurance Margaret Hagerty Agent
Tim Zylstra	Civic Action & Leadership Group	LUC Nutritional Outreach/LUC NO	Summer Kids E&ES Family Works
Groups That Volunteered In 2019	CSM City Service Mission	Mintel	Tyson
Andersonville Chamber of Commerce	Elliot's Consignment	Nick's Group	University of Memphis Alternative Break Experience
Argo Tea	Eta Sigma Step Team	Northside Catholic Academy	
Advocate Illinois Masonic Family Medicine Residency	Feeding America	Northwestern University Staff & Command Class #468	
Bloomington's	Fraternity Brothers from Loyola		
Chicago Cares	Gay for Good		
	Lane Tech High		

Legacy Society

The Legacy Society honors people who include Care for Real in their estate plans. We thank them for their generosity and support of those in need in our community.

Jerome Case	Julie Codlin *	Thomas Kmiecik*	Steven Pryor & Gregg Rojewski
Kathryn Coatar	Rosemarie Craig*	Nancy Meyerson	

* Deceased

For information on how you can become part of the Legacy Society, contact development@careforreal.org.

In-kind Partners

We are grateful for our generous in-kind partners who donated more than 98% of the groceries and all of the clothing, pet food, school supplies and holiday toys we distributed last year. Because of these businesses and organizations, we had an abundance of fresh fruit and vegetables, meat, poultry, seafood, bread and other baked goods and even special treats like Halloween candy and flowers for our clients. Last year, this translated into more than 740 tons of food.

A special thank you to our major food partners:

City Fresh Produce	Greater Chicago Food	Metropolis Coffee Company
Colectivo Coffee	Depository	Panera Bread
Edge of Sweetness Bakery	Jewel Food Stores	Trader Joe's
Fortune Fish & Gourmet	Mariano's	Whole Foods

And to those businesses whose gifts brighten the lives of our neighbors:

Bark Bark Club	Elliott Consignment	Patagonia
Bentley's Pet Stuff	Frances Francis	Pet Food Experts
BeYoga	Go Grocer	Target
Bombas Socks	Lady Gregory's	Toys Et Cetera
Crossroads Consignment	Organic Foodscaping	Urban Pooch

Donors

Donations, large and small, are what enabled Care for Real to provide enough food for our clients to prepare more than 1.2 million meals this past year. We gratefully acknowledge gifts made between April 1, 2019 and March 31, 2020.

\$10,000 and Over

Jerome Case
Nessim Cicurel
Richard Czuba &
Jim Spillane
Meredith George
Robert Jespersen, MD
Allan & Eleanor Odden
Jeffrey & Paula Vogelsang

\$5,000 - \$9,999

Ted & Kathleen Halloran
Nancy Meyerson
Larry Nieman
Ingrid Verhulst &
Pamela Holy

\$2,500 - \$4,999

Harold & Paula Baron
Gregory Boshart &
William Lawrence
Jennifer Breuer &
Andrew Goldberg
Noah Craft
Dolores & Roger Flaherty
Ariel Katz & Rene King
William & Shari Massey
Ann McGill & Kate Welborn
Richard Melman
Jeff Rittmueller
Nancy Schmitt
Heather Steans & Leo Smith
Michael Wasserman

\$1,000 - \$2,499

Dorian Bezanis &
Deborah Hirsch Bezanis
Jonathan Blake
Michael J. Bryan
Elizabeth & Rob Castrejon
Jim Cheshire &
Nouha Shwehdi
Ryan Chmiel
Peggy Cuniff &
Patrick Rocks
Robert & Isabel Curley

Joeseeph Czuba &
Mary Connor-Czuba
Gwyndolyn Dawson
Jennifer Debner &
Blaine Boogert
Marlo Del Percio &
Vic Filippini
Larry & Janet Eaton
Jessie Ewing
Kerry Frey
Andrew Gloyeske
William Hancox &
Pedro Benitez
Michelle & Andrew Hap
William Harmon
Mary Ann Harrington
Charles Helm
Bob & Sue Henning
Matthew Hinerfeld &
Nora Jaskowiak
Adrianne & Paul Johnson
Brian Kavanaugh
Michael & Shawn Klupchak
Hal Kugeler
Monica & Paul Kuzma
Teresa & Steve Laslo
Satish & Alice Luke
Andrew Macri &
Michael Kaba
Melanie L &
John R McCreary
David Mehlman &
Arlene Alpert Mehlman
Robert & Ashley Meier
Kimberly Mendiola
Debra & Edward Mellinger
Georgiana Micholas
Nina Newhouser &
Michael Miles
Ellen Newcomer
David Newcorn
Daniel & Shelly O'Brien
Edward & Rebecca
O'Connell

Timothy O'Malley
Mildred Olivier
Anne Phillips
Van Perrine &
Jan Farnsworth
Steven Pryor &
Gregg Rojewski
Dave Rasmussen
Michael Reed
Robert Remer
Michael Renz
David Rees & Donna Gates
Meredith Rountree
Diane Sakai-Furuta
Perry Smrz
Patricia Staszak
Linda M Stawicki
Lisa A. Stegink &
Michael W. Erickson
David & Alisa Tilson
Molly & Bob Walsh
Andrew Welling &
Matthew Mullen

\$500 - \$999

Mary Adamek
Michael Allen
Lydette Assefa
Rhoda K. Bernstein
Henry Bliss
Frank Bornhofen
Mary Jo & Norman Bowers
Laura Browning
Casey Byrne
John Callahan
Emanuela Z. Carney
Darin Cauley
Lauren Cheatham
Dennis Chudoba
Kim & John Dale
Ellen Dalton
Adele Claire De Mooy
Mary Doherty
Jason Eliason

Thomas Ferrini
Mark Fleming
Margaret Flynn
Mary Lou Gignac
Karen Goldner
Maryon Gray
Greg Gressle
Reggie Griffin
Lawrence Grimm
Jennifer Grochowski
Mary Grover &
Roy Lipscomb
Elizabeth Hahn
Donald Haider
Katherine Haigh
Peter Hayes
Andrew Hjelle
James & Lois Hobart
Rose Houston
Mary Hudson Kelley &
Thomas Kelley
Sandra Hunt
Scott Jellison
Vonnice Karafotias
Kimberley A. Kaulas
Susan & Jonathan Keyes
Andrea Khosropour
Nadeen Kieren &
Thom Green
Kelly Kleiman
Jules Law
John Leahy
Ted Lowitz
Kathleen Maas Weigert &
Andrew Weigert
Paul Mack
John Maclellan
Hilary Marsh
Paul & Mary McCloskey
Carol Miller
Marianne & Josh Mintz
Phillip Noel & Jeffery Fizer
Georgiana & Michael
Nowak

Daniel & Shelly O'Brien	Michael Chioros	Jonathan Ledsky &	Joyce Sweet
Gregory Olson &	Carol Clennon	Jeanne Cole	Anthony Todd
Dara Crowfoot	Joseph Michael Colacurcio	Patricia Levine	Karen Uselmann
Max & Sara Overton	Richard Cozzola &	Robert Link	Amy & John VanStee
Margaret Parkes	Deborah Hailey	Vincent J. Liotta	Brian Varian
Mary Alice Parsons	Charmaine Danguilan	Jim Lootens-White	Kristie Walstrum
Phillip Patinkin	Eva Davis	Daniel Lunney	Sloan Watson
Rachel Pearsall	Carrie DeVries	David T Mackenzie	Anna Wegerson
Larry & Lynn Peters	Searah Deysach	Patricia Marshall	Melissa Wemstrom
Jane Phillips	James Dickes	Geoff & Vanessa Mason	Samuel Bullock &
Christina Pipes	Katharine Dickson	Jeanne McCurry	Richard Westphal
Jane & Paul Quinn	Gina Diomedi	John & Karah Mcgeown	Rhys H Williams
Wallace & Margaret Rappe	Jan & Jerry Erickson	Lee McLain	Charles Wolf
Mary T. Schneider	Richard & Marjorie Ettlinger	Donna Melkonian	David Woolwine
Patricia Sharkey &	Mary Field	Nancy & Richard Merrill	Yasmeen & Timothy Wulf
John Markowski	Michael Fogarty &	Thomas Murphy	James Wyman
Tom Skilling	Anne Potter	Ashley Morgan	\$100 - \$249
Gerri Spain	Heather Fortier	Jim & Joan Nixon	Jan & Rich Aaron
Elizabeth Stake	Carol Friedman	Susan Obuchowski	Jonathan Abarbanel &
Margaret Sullivan &	Sallie L Gaines &	Mary Ann O'Connor	Danny Au
Chuck Elliott	Mark Richardson	John O'Hare &	Daniel & Karin
Patrick and Aimee Sullivan	Bridget Gavaghan	Carole Silver	Abercrombie
Linda & Moira Tannen	Jennifer Gaw	Jennefir Pentangelo	Larry Ableman
Deirdre L. Tannen	Donald Gecewicz	Melissa & Dawson Prater	Ron Abrams
Jim Thaxton	Brett Geiger	Teresa Prentiss	Rachel Adams
Robert H. Tucker	Sheena Gigante	Daniel & Theodore Raichel	Jeremy Adler
George & Melissa Tully	Seth Gransky	Louise Rasmussen	Ali Alirezaieyan
Rev. Paul Wachdorf	Jane Hardick	Linda Reizen	Celia J. Althage-Lefferts
Lauren Wagner	Wilbur Harpest	Andrew Rice	Ray Ames
Michael Waltz	Laura Hein	Mark Richardson	Joyce & Enio Amici
Steven Waynick	Marsha Holland	Angela Rinaldi	Christina Anderson
Veronica Wilson	John R. Huebler &	Josephine Ryan	Ponciano & Asuncion
Michael Withers	John Legge	Greg Sahli & Lydia Omori	Angara
Jerry & Donna Witter	Thomas Jensen	Kit Scheidenhelm	Silvio & Rose Marie
Julie Wlach	Homer Johnson &	Michael Scherer	Anichini
Andrew Woods	Janice Rashid	Tania Schusler	Hallie Askuvich
Teresita Zdunek	Mellaura Johnson	Madeline Scott	Sheldon Atovsky
\$250 - \$499	Mark Joslyn &	Thomas Scott	Susie & David Axelbaum
Culberth C. Amadi &	Christopher Konstantelos	Byron Scott	Sean Barnes
E. Sam Nwansi	Marieluise Kailing	Yuki Scroggins	Steven & Aliza Baron
Todd Baisch	Nicholas Kane	Carla Serantoni	Kathy Bavaro
Michael P. Bale	James Karela	Sandra Sheinin	Elisabeth Bayley
Paula M. Barone	Jeremy Kazan &	Michael Sheridan	Katie Beeks
Jackie Barron	Kendra Thulin	Tori Simms	William Beermann
Karin Bianucci	Karen Kerr	Magdalena Slowik	Gwendolyn Bell-King
Sandra Black	Sandor Kovacs Jr.	Mary Ellen Smajo	Anna Benedetto
Beatrice Bosco	Mary Krueger	Mairita Smiltars	Matthew & Rebecca
Jim & Ethna Byrne	Melissa Kuhlman	Sara Star & Jamie Star	Bennett
Leonard Campbell	Barbara Lanctot	Allen & Suzanne Stryczek	Bleue Benton &
Dennis Card &	Lincoln Lauhon &	David Sullivan &	Paul Boisuert
Maureen McCanty	Maureen Bolon	Jill Sullivan	Andrew Berman &
Alice Rae Casey	Rev. Gary Lawler	William Sullivan	Pamela Kaul

Donors continued

Craig Berry	Donald Cousino	Verna Foster	Jerry Herst &
Judith Bianchi	Judith Crampton	Susan Frances &	Julie Dorfman
Jim & Mary Binsfeld	Barbara Cullen	Elaine Kennedy	George Hinrichs
Leroy Blommaert	Alyssa Cullinan	Janet Franz	Debra Hoegemeyer
Austin Bolton	Anne Barry Curley &	Andrea Friedman	Virginia Hurley
Lyn Borisof	David Curley	John Fuja	Bruce Iglauer
Sarah Bornstein	Chad Curry & Julia Brenner	Jeanne Fujimoto	Timi Ismaila
Paul Boyd &	Patricia Curtis	Colleen Fulkerson	Linda Jackson
Kathleen Dunne	Alice Czech	Cherie Gabriel	Karen Jacobs
Frank H. Bramson	Curtis & Carole Dale	Maureen Galligan	Sarah Jacoby
Pamela Brandt	Michael Dalfonso	Laurie Gates	Laura Jalette
Catherine Brenner	Jaime Danehey	Patricia Gaule	Richard Krach &
Linda Bridenstine	Kevin Davis	David Gauthier &	James Barrett
Marguerite Britton	P. Barton &	Chad Otten	James Jardine
Sarah Brotherton	Mary Mikel Delacy	Laura Gawlinski	TJ Jarvis & Cynthia Stanford
Joanna Broussard	Kate DeMille	Megan Gebhardt	Henry Jaskowiak
Janice M. Browning	Doug & Shera DeMuth	David Gemperle &	Jane Jerrard
Jamie Brunson	Janet Desaulniers	Kathryn Duskey Gemperle	Mary Johnson
David Buchanan	Hans Detweiler &	Carol & Robert Gibbons	Lauri Johnson
Nancy Buik &	Julieanne Ehre	Marsha Gilden &	Adrianne & Paul Johnson
Jeffery Wegerson	Jose Dimauro	Steve Bishop	Keely Jones
Nancy Bujnowski	Philip Doherty	Lauren Gingras	Mary Anne Joyce
Fritz Burgher	Rafael Dominguez	Bryce Gintoft	Rebecca & Steve Judd
Elizabeth Burlage	Ellen Domke	Arlene Gloria Hirsch	Kathleen M. Kahoun
Maggy Burnes	George & Grace Donlin	Mary Ann Goode	Robin Kail
Rachael Burs	George E. Donlin	Denise Goodman	Joanne Kalnitz &
David Bush	Rohini Dsilva	Jerry Goodman	Marshall Sorkin
Duncan Butler	Bryan Duff	Willam Gorman	Jennifer Kane
Bruce Calder	Patricia Duff	H. Candace Gorman	Heather Kasmersky
Michael & Joan Callahan	Michael L. Dunghe	Mary Graden	Maggie Kast
Maria Campbell	Magali Duvivier	Nellie Greely	William Kearney
Carol Cassini	Jodie Eason	Susan Green	James & Laurie Keenan
Michael & Kimberly Cavitt	Jerome Eberle	Kathleen Gregory	Robert & Margaret Kendall
Mary & Keith Chase-Ziolek	Julie Ehrlich	Karen Griebel	Jane Kerr
Alex Cheser	Karen Engelhardt	Sabrina Grimaldi	Nicole Kersey
Tiffany Chiang &	Stanley Engelsen	Sam & Sheila Gross	Richard Kieckhefer
Michael Polsky	Janet & Robert Esnes	Martina Gruyters Molins	Jennifer Killam
Michael Chip	Cynthia Espy	Caroline Guenette	Michael King
Ann Clements	Jerry Ettinger	Bari Guibord	Geary King
Jane Clifford	Christopher Evers	Janet Gunn	Kathleen Kirby
Kathryn Coatar	Merri & Mitchell Ex	Margaret Hamil	Randy Klipstein
Alex Coburn	James Fahey	Illysa Hamlin	Paul Kobasa
William Coffin	Richard Falkner	Wayne Hanson	Kevin Kodama
Richard & Elizabeth Cohen	Virginia Falkner	Sarah Haque	Michael Kohn
Jeanne M. Cole	Fadi Farhan &	Jacquelyn & Dennis Harder	Melanie Koskamp
Christina Coleman	Selma Farhan	Karen Haring	Susan Kraeger Kapche &
Rebecca Collins	Norma Felbinger	Lee Harold	James Kapche
Jeff & Liz Coney	Mark Felty	Rosemary Hart	Jan Kralovec
Kevin Connell	Gabriela Fitz	Eileen Hartnett Wicklin	Jonathan Krieger
Kevin Conway	John Flowers	Daniel Hegadore	Marcella Kukenis
Lisa Conway	Carl Foote	Allison Hendron	Cecilia Kukenis
Amy Cornelius	Kathleen Foskett	Molly Hernández	Edward & Barbara Kuske

Fred & Lydia Landini	Karen Muller	Kevin Reilly &	Susanne Suffredin
Kimberly Larson	Kathleen Murphy	Renee Reilly PhD	Patricia Sugano &
Jeanne LaVoie	Diana Myers	Sandra Rigopoulos	Stephen Hashioka
Connie Lawrence	Lisa Myers	Edward Riley	Lucy Sullivan
David Lawson	Marie Myszkowski	Kari Robbins	Timothy Sullivan
Quyen Le	Chantal Nadeau	Mary Jane Roberts	Elizabeth Swanson
Christina Legue	Louis & Rose Nathan	Karyn Rockwell	Brett Swinson
Beth Lehman	Alexandra Neame	Louise Rohr	Jessica Tansey
Jacqueline Leskovec	Sherry Nelson	Nancy Roozee	Ryan Tappel
Tina Levitt	Stuart Nelson	Mollie & Nelson Rosario	Alex Temple
Regina Lin	Barbara Netter	Lisa Rosenthal	Derrick Ternoir
Jacalyn Linko	Angela Newhouse	Rebecca Rossof	Julie Thurber
Sarah Lloyd	Anna Newlin	Marcy & Jon Ruesch	Erik Tillman
Joshua Locher	Barbara Newman	Jason Russell	Lawrence Timmins
Patricia Loew	Eva Niewiadomski	Margaret Russell	Linda Triplett
Regina Logan	Meredith Nonnenberg	Robert Sagartz	Terry N. Tuohy
Alix Lopez	Robert Oakes	Suzanne & Lawrence	Elinor Turbov
Jeanne Loshbough	Laura Oakleaf	Schaeffer	Helene J. Turner
Delores & Donald Lynch	Joan Oberndorf &	Jennifer Schmidt	Moronke Tyler
Gertrude Lyons	Jordan Grauer	Rita Schnell	Lynn Vance
Dan Mahoney &	William O'Brien	Mary Schopp Stoner	Jonathan VanderBrug
Aileen Heidkamp	Kathryn O'Connell &	Nancy Schroeder	Kate Varde
Joy Malnar	Mario Gonzalez	Susan Seltzer	Ralph Veccie
Bob Markey &	Jane & Bernard O'Connor	James Setapen	Yolanda & Peter Vetrano
Bridget McDonough	John O'Connor	Gerald & Rachel Sheffer	Barbara Vicory
Kathleen Marrin	Jennifer Orillaza	Elizabeth Shermer	Rikke Vognsen
Alice Marx	Kimberly Osgood	Helen Shidler	Mary Vogt
Kristine May	Nick Pappas	Charles Simanek &	Michael & Maureen Volini
Maria Mazza	Diana E. Paquin Morel	Edna Burke	Eileen von Husen O'Neil
Michael McCalley	Arlen Parsa	Susan & Michael Srivinskaskas	John & Annette Vranas
Michelle McClure	Gena Parsons-Diamond	Lisa Skemp	Daniel Wagstaff
Patrick McDaniel	Lynn Patinkin	Mairita Smiltars	John Wahlund
Denise McIntosh	Merrill Perlman	Carrie Smith	Paul Waite
Rev. Carol McVetty &	Julia & Lynn Petrelli	Patrick Smith	Carolyn Wald
Rev. Doug Harris	Mark Petroelje	Janet Smith	Debra Walker
Melinda Meier	Janet Petry	Mr. & Mrs. Michael Sobel	Hope Wallace
Luke Meier	Suzan Pinsof	Harry Soenksen &	Mitchell Walser
Steve Meiss	Melissa Pruessing	Margaret Cavenagh	Carol D. Walsh
Lucinda B. Mellott	Robert & Sarah V. Puccia	Ellen Goodman Sontag	Brian & Judy Weber
Catherine Mendenhall	Kathy Murphy	Joan Sophie	Dorothy Webster
Barbara & Bob Mesle	Madiha Qureshi	Kristin Sottardi	Clare Wefelmeyer
Peter Miley	Sarah Rabbitt	Maureen St. George	Richard & Karen Weiland
Jean & Lyle Miller	Thomas Radcliffe	Rachelle St. John	Martha Welter
Bradley Miller	Tisha Rajendra	Marc Stackler	Ted Whalen
David Miller	Kevin Rakow	Erin Stafford	Tiffany Wilson
Mark Miller &	Adrian Randolph	James Steele	Paul Winberg &
Anita Weinberg	Laura Ranum	Susie Steinberg	Bruce Czuchna
Rev. Sterling Minturn	Rachel Razowsky	Shawn Stengel	Matthew Wolfe
Jill Misilinski	Kathleen Reed	Bonnie Stesin	JoAnn Worthly
Emily & John Mitchell	Loretta Reed	Kelly Stoltz &	Scott Wyngarden
Peter Moore	Marcia & James Regan	Richard Stoltz	Jane Yakushiji
Zulma Morales	Richard P. Reichstein	Richard Stuckey	Hassan Yamin
Mary & Kurt Mrowicki		Michael & Julia Studier	

Donors continued

Shana Yeh
Beth & Neil Yoke
Carol Yoshino
Janis Young
Angel Ysaguirre
Alana Zalas
James Zangs
Wenlu Zhou
Simone Zurawski
Nancy Zwick

Corporate, Foundation, and Community Business Donors

\$25,000 and Over

Eunice & Joshua J. Stone
Foundation
North Shore Exchange
The Reva & David Logan
Foundation

\$10,000 - \$24,999

The Chicago First Ward
Fund
Harris Family Foundation
Helen V. Brach Foundation
The Silver Foundation

\$5,000 - \$9,999

Dr. Scholl Foundation
John R. Houlby Foundation

\$1,000 - \$4,999

5142 N Clark St LLC
ACT Group
Anam Foundation
Andersonville Physical
Therapy
Aurora Chicago Lakeshore
Hospital, LLC
Bulley & Andrews LLC
Communitas Charitable
Trust
Diageo North AME
Corporate
Edgewater Uptown
Builders Association
(EUBA)
First Midwest Bank-
Edgewater
Goose Island Brewery
Greencity Project LLC

Kebok Foundation
Polk Bros. Foundation
S&C Electric Company
Saddle & Cycle Club
The Starbucks Foundation
West Monroe Partners
Whole Foods
Wintrust Financial Corp
Zirlin Interiors

Under \$1,000

AAA Targeted Writing and
Coaching Service
Accenture
AIA Centro Hispano
Insurance
Alamo Shoes
Andies Restaurant, Inc.
AON Foundation
AT&T
Audiology Resources, Inc.
B & B Design and
Development Inc.
Berry Global Corporate
Carol's Pub LLC
Cellars Bar and Grill
Chicago Grind
Clinical System
Specialists, Inc.
Counting House
Bookkeeping, LLC
Dollop Diner
Edge of Sweetness
Farm Bar
Fifth Third Corporate
Fig Media Incorporated
Forward Space LLC
Foursided
Galoney-Strubbe
Charitable Foundation
Glenwood Systems Inc.
Graham Holdings
Helix Café
HHL Foundation
Income Tax Restaurant
Jahns Family Foundation
Karen Meier, Inc.
Kim Kaulas, Inc.
Lettuce Entertain You
Enterprises, Inc.
Marty's Martini Bar
MillerCoors, LLC
Nordstrom

North Side Federal Savings
& Loan Association of
Chicago
Oda Restaurant
Pizzeria Aroma
Presto Dent Company
Ras Dashen Ethiopian
Restaurant
Raygun Shirts
Raymond F. Simon Trust
Rosen-Fishing Fund
Shake Shack Enterprises
Smack Dab Chicago
Soul Jams Ltd. Corp.
Takeda Pharmaceuticals
USA Inc.
Tawani Enterprises
The Call Bar
The Coffee Studio
The Shier Family Fund
Uncommon Ground
U.S. Bank Corp.

Community and Religious Partners

1500 Block of West Hood
Abbey Cavitt's Pack the
Trunk Project
Allegrezza Singers
Ancient Order of Hibernians
Andersonville Chamber
of Commerce
BARGE Neighbors
Association
Business Partners, The
Chamber for Uptown
Center for Research
Libraries
Chicago Jewish Day
School
Chicago Northshore Elks
Lodge #1316
Chicago Shares
Chi-Town Jazz Fest
Decatur Classical School
Delta Tau Delta
Interfraternity Council
East Andersonville
Residents' Council
Edgewater Beach
Gardeners' Association

Edgewater Glen
Association
Edgewater Historical
Society
Edgewater Presbyterian
Church
Emanuel Congregation
Episcopal Church of the
Atonement
Evanston Catholic
Woman's Club
Healthcare Associates
Credit Union
Hunger Resource Network
Immanuel Evangelical
Lutheran Church
Lakewood Balmoral
Residents' Council
Loyola University
North Shore Baptist Church
Pack the Car
Peirce Girl Scout
Troop #25682
Peirce Parents' Basketball
League
RefugeeOne
Rickover Naval Academy
Ruth's List
Sacred Heart Schools
Seventh Church of Christ
Scientist
Shoreline Towers
Sisters of Charity of Our
Lady Mother of Mercy
St. Andrews Women's
Philoptochos Society
St. Gertrude Parish
St. Gregory the Great
Church
St. Ita Parish
St. Philip Lutheran School
St. Stanislaus Kostka School
St. Timothy Women's Club
Statesman Condo
Association
The Night Ministry
Trinity Church
Unity Lutheran Church

Tributes

We remember and celebrate the following who were honored with tribute gifts made between April 1, 2019 and March 31, 2020.

In Memory of

Riley Bitzer
Harvey Borisof
Patrick & Elizabeth Connor
Alma Cosgrove
Rosemary Craig
Brian Patrick Dunne
Rose Glashagel
Lois Gould
Jean Wright Haider
Geneva J. Griffin
Father William Johnson
Josie
Patti Kampsen
Max Kerzner
Mark Kleiman
Tom Kmiecik
Irma Leavitt
Al Lewis
Carol McRaith
Rt. Rev. James W. Montgomery
Geraldine Mulherin
Marion Newell
Lynn Pierce
Katie Remer
Suzanne Schaeffer
Matthew & Margaret Schneider
Herbert Schrager
Martin Stegink
Camillo Volini
Marion Volini
Charles Yager

In Honor of

2019 Emanuel
Congregation
Confirmation
Students
Algie- Fogarty
Lyle Allen
Carol Anshaw
Herb Boone
Sarah Bornstein
Ethel Brown-Simmons
Clarisse Croteau
Chonka, Ph.D.
Danny Chryst
Patti Colandrea
Jeanne Cole &
Jon Ledsky
Noah Craft
Katy D
Delta Tau Delta
Mari, Alex and Louie
Durlacher
Ebenezer Lutheran All
Kids Sunday School
Edgewater
Community
Religious
Association (ECRA)
Rose Eisenberg
Kelsey Eliason
Jessie Ewing
Roger & Dolores
Flaherty
Reggie Griffin
Elizabeth Helm
Rebecca Hendrickson

Rosemary & Elizabeth
Hodges
Nancy Holmstrand
Bob Inserra
Donna Jaggard
Adrianne Johnson
Angela Just
Chris Kabana
Jessica Katz
Richard Krach
John and Martha
Kraeger
Charles Law
Daniel Learner
Bonnie & Chuck Mervis
Milo & Dorothy
NCA Students
Nina Newhouser
Nick & Mike at
Trader Joe's
Edward J. O'Connell
Karen & Jerry Olson
Margaret Kollar
O'Sullivan
Jacqueline Patinkin
Peirce Elementary
Students
Van Perrine
Polgar Family
George Prater
Steven Pryor &
Gregg Rojewski
Mark Richardson
Rhoda Rosen
Skip Salinardo

The Staff at Sauganash
Elementary School
Pat Sharkey &
Jack Markowski
Ashley Short
Dave Smith &
Rebecca Jeffords
Davia Smithmeyer
Mary Ann Smith
Jack Sobczyk
Harry Soenksen
Chris-Annmarie
Spencer
Sara Stigberg
Nicole Von Suhr
Andrew Suszek
Terri Swerth
Chris Tamani
Schueler Varde
Bridget Verdon
Dr. Kyle Wade
Wagner Family
Rachel Weeks
Sammy Weill
Kate Welborn
Kristina Winters
David & Jacqueline
Wood
Anne Wridar
Zelda and Joe

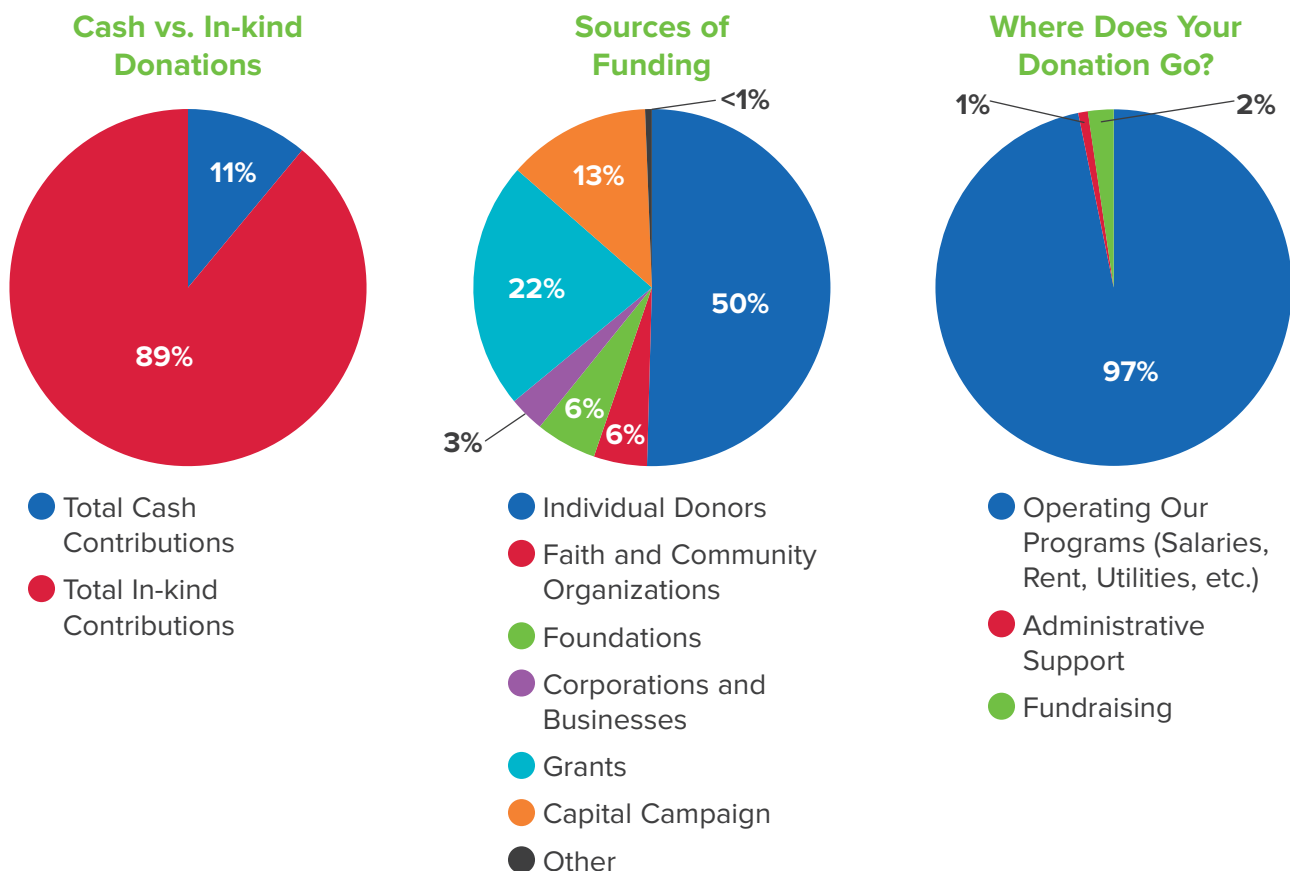
Financials

A Note From Our Treasurer

Our financials show that Care for Real is a \$6.7 million dollar organization. But most of that – 89% – is the value of the food, clothing, personal care items, toys, pet supplies, household items and other goods that are given to us and immediately distributed to our clients.

Our cash contributions in FY 2019-2020 were only \$740,000 or 11% of our income. But it is this money that enables us to pay rent, utilities and salaries; run our Care for Real vans, and buy food from the Greater Chicago Food Depository and other sources.

Of the funds received this year, 20 percent was restricted to the renovations of our pantry. In addition, we were fortunate to receive generous early support from the community specifically to help us meet the needs created by COVID-19.



FY 2019 April 1, 2019 through March 31, 2020

Public Support and Revenue	2020	2019
In-kind contributions	5,971,488	6,289,703
Individual donors	373,643	281,414
Faith and Community Organizations	35,748	39,024
Foundations	40,995	23,157
Corporations and businesses	23,863	32,302
Grants	166,040	105,505
Capital fundraising	95,994	—
Other	4,520	327
Bequests	—	8,011
Total	6,712,291	6,779,443
Operating Expenses	2020	2019
Program costs	6,273,765	6,592,917
Administrative	89,327	59,047
Fundraising	121,559	158,960
Total	6,484,651	6,810,924
Net Revenue	227,640	(31,481)
Assets	2020	2019
Cash & cash equivalents	754,666	701,445
Inventories	55,636	36,014
Prepaid operating expenses & deposits	7,961	9,030
Total current assets	818,263	746,489
Net property & equipment ¹	194,422	57,088
Security deposits	11,752	—
Total assets	1,024,437	803,577
Liabilities	2020	2019
Accounts payable	9,286	10,825
Payroll liabilities	5,037	10,275
Long term liabilities	—	—
Total liabilities	14,323	21,100
Total Net Assets ²	1,010,114	782,478
Total	1,024,437	803,577

¹ Net property & equipment includes accumulated depreciation.

² Total net assets includes unrestricted and restricted funds.

Board of Directors

Nancy Meyerson
Chair

Jerry Case
Treasurer

Steven Pryor
Secretary

Jane Clifford
Don Cortelyou
Debbie Mellinger
Kim Mendiola
Nina Newhouser
The Rev. Jim Nixon
Ed O'Connell
Sid Panjwani
Van Perrine
Joyce Golbus Poll
Brendon Pozniak
Jennifer Schmidt

Past Chairs

Reggie Griffin
Ingrid Verhulst

Staff

Lyle Allen
Executive Director

Mustafa Abdul Maboud
Director of Operations

Katherine Polgar
Development Manager

Karen Feiler
Volunteer Coordinator

Care for Real

5339 N. Sheridan Rd.
Chicago, IL 60640
773-769-6182

info@careforreal.org
www.careforreal.org

Care for Real is a 501(c)(3) organization.
Contributions to Care for Real are tax
deductible to the full extent of the law.

